



Client : **Lace Market Properties**

NorthWest and Hanley House

Client
LMP

Construction Cost
£16million

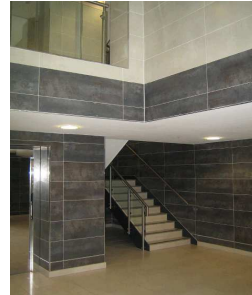
Appointment
Lead designers

Consultancy Duties
architectural services
interior design
space planning

Design Team
Architect/Lead Consultant – JMF
Structural Engineer – BSP
M+E – Acumen
Pool – Greyfox

Key dates
appointed: February 2007
completion: July 2008

Main Contractor
TFS Ltd



JMF were responsible for delivering this residential development in the centre of Nottingham.

The project includes 164 apartments, three retail outlets, a swimming pool/sauna/spa located at level -1 with visual links into the main ground floor reception area, and a squash court adjacent to the changing rooms and accessed with a viewing gallery to the level above.

The development also includes two storeys of basement car parking where we assisted the Civil Engineers in the detailing of the retaining walls. We also worked closely with the Fire Officer to ensure the spaces were adequately ventilated and compliant for evacuation in the event of fire.

The gymnasium is located at ground level, accessed from the main reception. This provides aerobic and cardiovascular facilities.

The project provides a mix of one, two and three bed apartments, with internal glazed walls and open-plan kitchen living areas.

JMF managed the team in assisted the client with the planning application and were then novated to the Main Contractor on a Design + Build Contract providing a full production information package and on-site assistance through to completion.

For more information please call James Firth on 07790 019248.

