



Client: **Center Parcs**

## **Sherwood Village, Nottinghamshire**

### **Client**

Center Parcs

### **Construction Cost**

£6.0million

### **Consultancy Duties**

Co-ordinating Architects

Consultant Architects

RIBA stages a-m

### **Key dates**

appointment: March 2003

planned completion: on-going

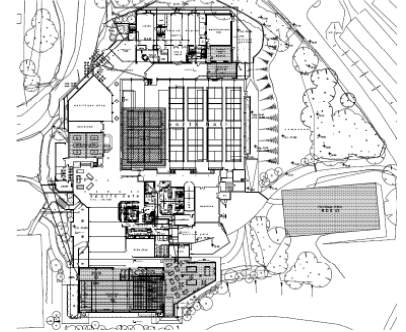
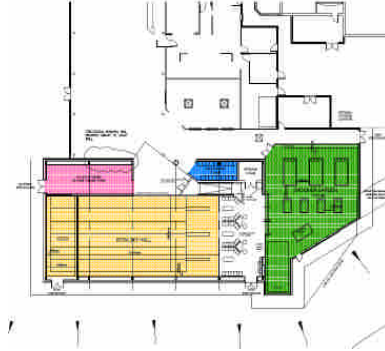
### **Procurement Route**

JCT 98

### **Architectural team**

James Firth (project partner)

Helen Lee (project architect)



Project Partner working within a Center Parcs on their new Leisure Bowl project and a range of branded retail concessions within the village square. The nature of the site has resulted in a number of options being provided for discussion with the Center Parcs board. Due to a recent buyout by private equity firm Blackstone, it is the intention to develop the retail outlets of the operations.

Our scope related to the production and coordination within the design team of all Planning and Building Control application issues.

